

Double Hung Window

Features:

- Sashes tilt in for easy cleaning
- Positive-action cam lock enhances safety (2 locks standard at 27-1/4" or wider)
- Insulated glass panels with optimum thermal air space featuring a warm-edge spacer system
- Half screen comes standard
- Sloped sill reduces air infiltration and accommodates easy water run-off
- Fusion-welded sashes and frame add strength and additional insulation
- Constant force coil balance permits easy sash movement
- Dual push-button night latches provide easy, secure ventilation
- Jamb depth: 3.25"
- Lifetime glass breakage warranty
- Transferable limited lifetime warranty

Custom Options:

- Low-E Glass
- Low-E Glass with Argon Gas
- Ultra Low-E Glass with Argon Gas (May be required for Energy Star rating)
- Obscure glass
- Double strength glass
- Optional 5/8" or 1" contoured grid; 5/8" or 3/4" flat grid, 5/8" contoured valance available
- Aluminum charcoal mesh screen
- Sash Limiter

Product Performance:

AAMA 101 Results:

Window Size	AAMA Rating (psf)	Air (cfm/ft ²)	Water (psf)
48" x 78" (X/X)	LC-PG25	0.10	5.43
36" x 74" (X/X)	LC-PG35	0.10W	5.43
109" x 74" (X/X – X/X – X/X DH Mullied Triple)	DP35	0.18	5.43

Product Dimensions:

Vinyl Wall Thickness:	0.062"
Typ. Glass Thickness:	0.750"
Jamb Depth:	3.250"
Mullion Adder:	
Standard:	0.125"
High Performance:	0.2500" XX
	0.3750" XO
	0.6250" OO

Rough Opening:

Window Width + 1/4"
Window Height + 1/4"

Size Restrictions:

	Min:	Max:
Width	14-1/2"	54"
Height	23-1/8"	91"

(Max. United Inches 126")



Double Hung Window

Egress Formulas:

Egress Width $\geq 20"$ and Egress Height $\geq 24"$ and Egress Area $\geq 5.7 \text{ ft}^2$ required to meet egress.

Egress Width Formula = Window Width - 5"

Egress Height Formula = (Window Height/2) - 6.250" (1 Coil)

(Window Height/2) - 7.875" (2 Coils)

(Window Height/2) - 9.500" (3 Coils)

Egress Area Formula = (Egress Width x Egress Height)/144

Screen Formulas:

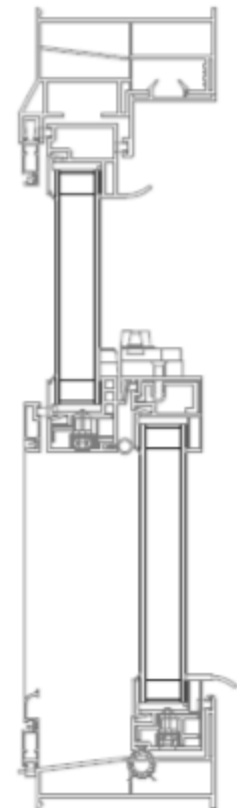
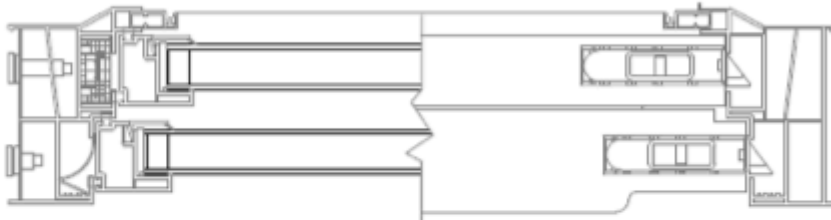
Window Width - 4.500" (Full Screen)

Window Height - 3.250" (Full Screen)

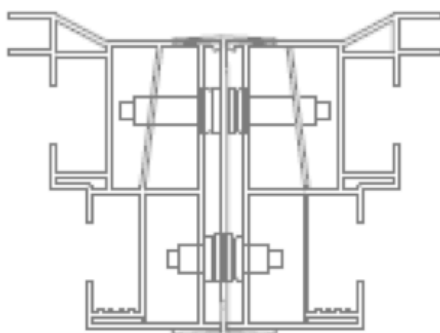
Window Width - 4.4375" (1/2 Screen)

(Window Height/2) - 0.500" (1/2 Screen)

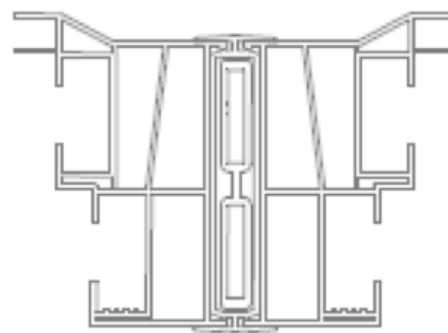
Cross Sections:



Standard Mullion Assembly:



High Performance Mullion Assembly:



2 and 3-Lite Sliding Window

Features:

- Reinforced multi-cavity construction offers additional thermal protection and structural integrity
- Positive-action cam lock enhances safety (2 locks standard at 27-1/4" or higher)
- Insulated glass panels with optimum thermal air space featuring a warm-edge spacer system
- Tandem rollers ride easily along friction free glide channel
- XO or OX 2-lite styles available (one sash operates)
- Half screen comes standard
- Fusion-welded sashes and frame add strength and additional insulation
- Jamb depth: 3.25"
- Lifetime glass breakage warranty
- Transferable limited lifetime warranty

Custom Options:

- Low-E Glass
- Low-E Glass with Argon Gas
- Ultra Low-E Glass with Argon Gas (May be required for Energy Star rating)
- Obscure glass
- Double strength glass
- Optional 5/8" or 1" contoured grid; 5/8" or 3/4" flat grid, 5/8" contoured valance available
- Aluminum charcoal mesh screen
- Sash Limiter

Product Performance:

AAMA 101 Results:

Window Size	AAMA Rating (psf)	Air (cfm/ft ²)	Water (psf)
78" x 48" (O/X)	R40	0.17	6.06
96" x 48" (X/O/X)	R30	0.24	4.59

Product Dimensions:

Vinyl Wall Thickness: 0.065"
Typ. Glass Thickness: 0.750"
Jamb Depth: 3.250"
Mullion Adder: 0.125"

Rough Opening:

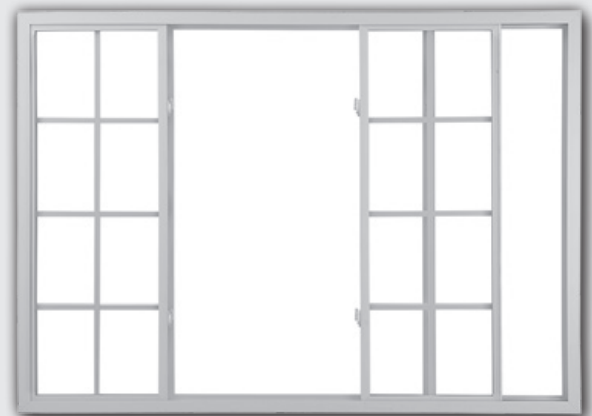
Window Width + 1/4"
Window Height + 1/4"



2-Lite Slider Size Restrictions:

	Min:	Max:
Width	23-1/8"	84"
Height	17-3/4"	72"

(Max. United Inches 132")



3-Lite Slider Size Restrictions:

	Min:	Max:
Width	60"	120"
Height	17-3/4"	72"

Width restriction for 1/3, 1/3, 1/3 =
min 54" and max 90"
(Max. United Inches 158")

2 and 3-Lite Sliding Window

Egress Formulas:

Egress Width $\geq 20"$ and Egress Height $\geq 24"$ and Egress Area $\geq 5.7 \text{ ft}^2$ required to meet egress.

Egress Width Formula = $(\text{Window Width}/2) - 4"$ (XX)

$(\text{Window Width}/3) - 4.25"$ (XOX 1/3 1/3 1/3)

$(\text{Window Width}/4) - 2.125"$ (XOX 1/4 1/2 1/4)

Egress Height Formula = $\text{Window Height} - 4.875"$

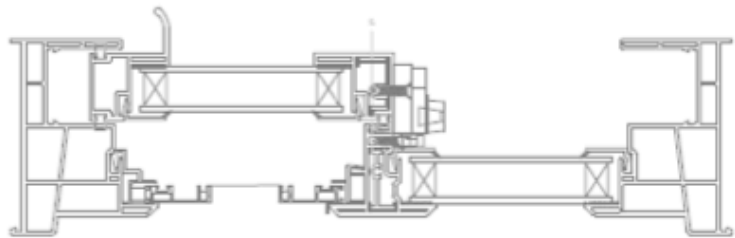
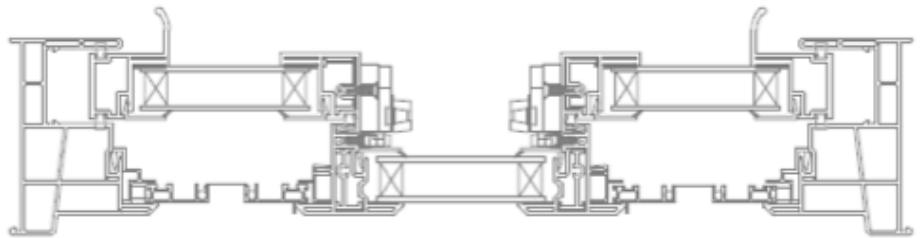
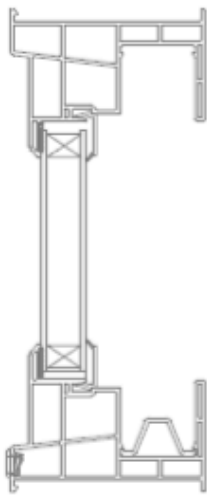
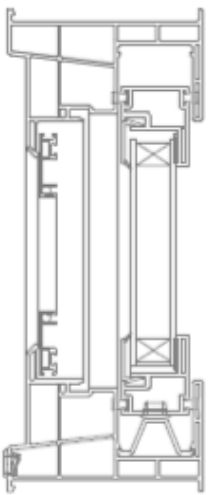
Egress Area Formula = $(\text{Egress Width} \times \text{Egress Height})/144$

Screen Formulas:

$(\text{Window Width}/2) - 2.8125"$ (1/2 Screen)

$\text{Window Height} - 4"$ (1/2 Screen)

Cross Sections:



Mullion Assembly:

